



CCM RESEARCH

TRUE INVESTMENT INTELLIGENCE

TECHNICAL REPORT

MAY 12, 2008

CHIEF TECHNICAL ANALYST:

JASON ANTHONY SUTTMEIER



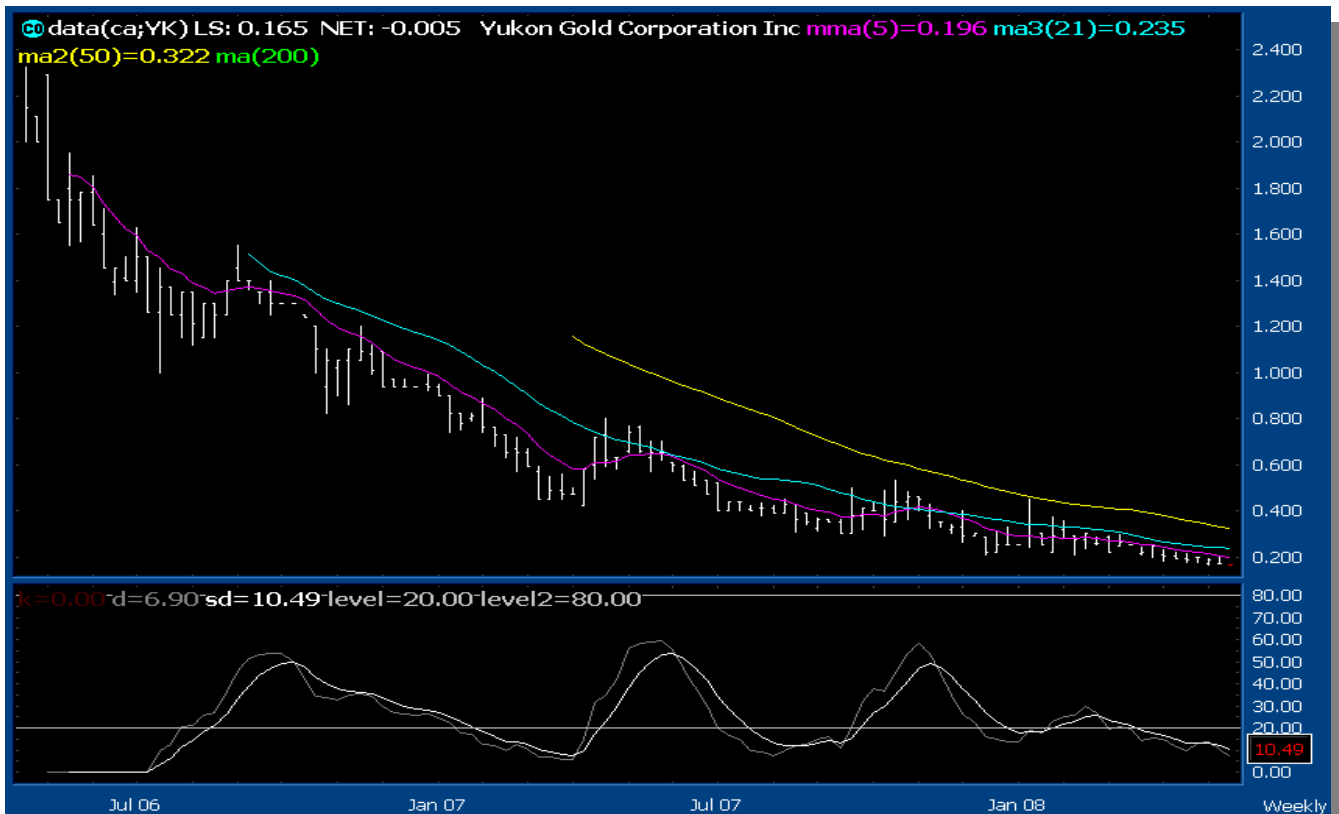
YUKON GOLD
CORPORATION INC.
55 York Street, Suite 401,
Toronto, ON M5J 1R7
Phone: (416) 865 9869
Fax: (604) 602 0674
Email: info@yukongoldcorp.com

INDUSTRY: MINING

RATING: VALUE

YUKON GOLD CORPORATION INC. YK: TSX

- 1) Yukon Gold Corporation Inc. (YK) is currently trading under the key 5- weekly modified moving average at 0.196 with oversold weekly sentiment.
- 2) My model shows weekly support at 0.143 with monthly resistance at 0.207.
- 3) The 21- week and 50- week moving averages provide additional resistances at 0.235 and 0.322.
- 4) The relative strength index is flat.
- 5) Momentum is now declining.



Athena graphics courtesy of Reuters



KEY TECHNICAL ANALYSIS DATA:



Athena graphics courtesy of Reuters



DISCLAIMER

The qualified professional analyst submits information, opinions, estimates or ratings contained in this report solely for information purposes. The information used and statements of fact made have been obtained from sources considered reliable but no guarantees, nor representations, are made as to the completeness or accuracy of the same. No representations whatsoever are being made by Cronus Capital Markets, Inc.

Cronus Capital Markets, Inc. accepts no liability whatsoever for any direct or consequential loss or damage arising from any use of this report or its content. Such information and the opinions expressed are subject to change without notice. This report or study is not intended as an offering or a solicitation of an offer to buy or sell the securities mentioned or discussed. Cronus Capital Markets does not provide any investment banking, market making, or trading services for any company.

Cronus Capital Markets, Inc., through its CCM Consulting division, entered into a one year \$40,000.00 contract with the Company to assist with strategies related to the increase of share liquidity and general market presence.

CCM Research, a division of Cronus Capital Markets, Inc., will produce research (one component of the overall program) related to the company on an annual basis. We do not inform any company in advance to the nature, or conclusions of our analysts' reports, nor can a company withdraw from coverage before the expiration of the one year term. All reports are solely the product of the analyst, and CCM Research acts only as a facilitator; and after the reports are completed, publishes and distributes them to the investment community.

CCM Research also subscribes to the principles contained in the Analyst/Corporate Issuer Guidelines jointly promulgated by the CFA Institute and the National Investor Relations Institute, described at: <http://www.cfainstitute.org> and <http://www.niri.org>.