

## NEBU RESOURCES INC.

TSX-V: NBU

Closing Price (February 6): \$0.275

52-Week Range: \$0.60-\$0.02

Shares Outstanding: 50.8 million

Market Cap: \$13.97 million

**Recommendation: Speculative Buy (No Change)**

**12-Month Target Price: \$0.65 (No Change)**

### ACQUISITION OF MINING CLAIMS

Nebu Resources Inc. has acquired a 100% interest in a group of 11 historic patented mining claims in the area of the Company's Timmins West properties (Ontario). See Note, page 2.

The claims, known as the Morin property, are adjacent to a past-producing gold mine, owned by Goldcorp Inc. and subject to an earn-in agreement with Metals Creek Resources Corp. The acquisition provides Nebu with property adjacent to both the north and south boundaries of the Goldcorp/Metals Creek property, which includes the past-producing Naybob gold mine. The Naybob mine operated between 1932 and 1964, and produced just over 50,000 ounces of gold.

Nebu has begun a program of line cutting, and magnetic and induced polarization surveying at Morin, and has plans to begin drill testing of parts of the property within the next two months.

#### The Terms

The total consideration for the property is \$400,000, payable as follows: \$200,000 on closing; \$100,000 payable on the first anniversary; and \$100,000 payable on the second anniversary. The seller has the option to convert either or both of the \$100,000 payments into 250,000 Nebu common shares. The 100% interest is subject to a 2% NSR; Nebu can purchase 1% of this for \$1 million.

For further details, see Nebu's February 4, 2010 news release, available on SEDAR at [www.sedar.com](http://www.sedar.com).

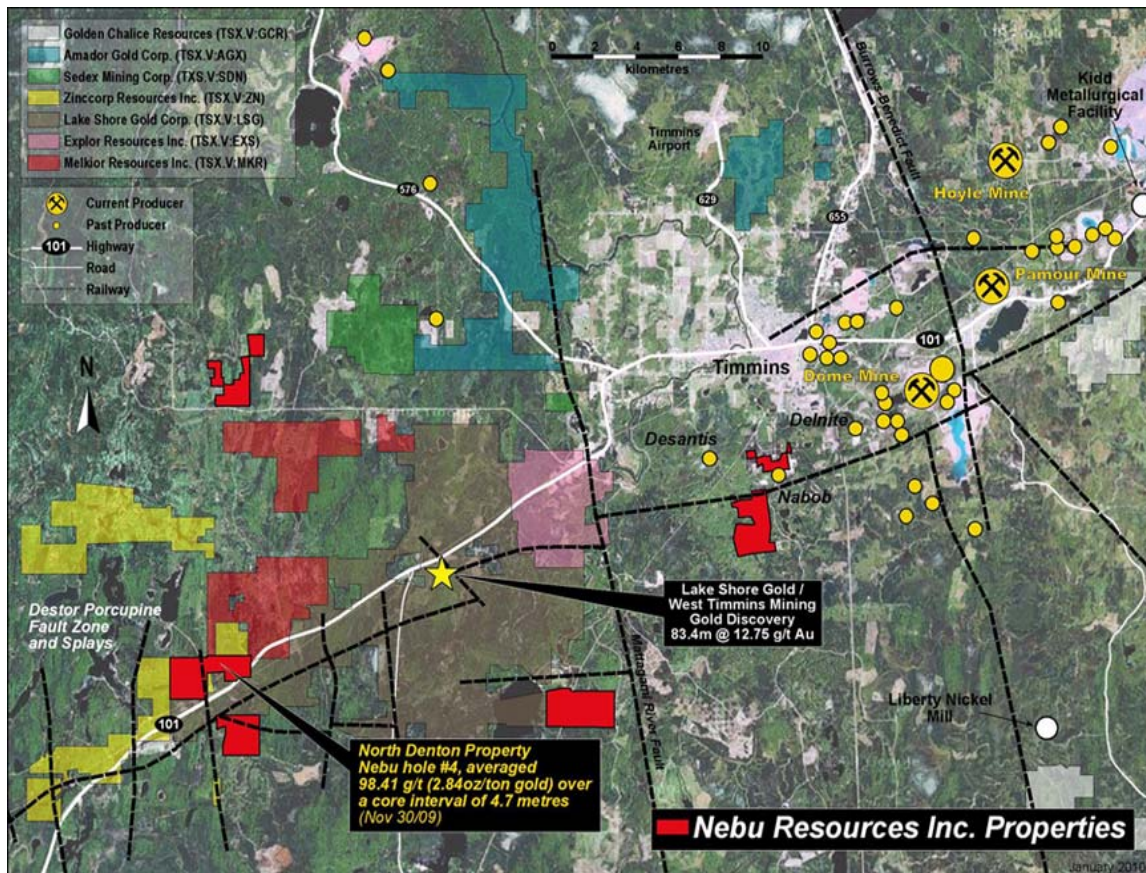
**COMMENT:** *August 31, 2009, the Company had \$179,564 in cash. Based on the Company's operating and capital spending to date and factoring in a \$1.5 million equity financing completed in September and a \$655,000 flow-through financing in December 2009, Nebu has sufficient cash resources to make the required payments totalling \$200,000 on closing.*

**Note on the Timmins West Properties:** The Timmins West properties have great potential for a large find. The Timmins Gold Camp has produced 70 million ounces of gold since 1909. Historically high-grade discoveries have occurred along or in close proximity to major fault systems. Tens of kilometres of these major fault systems run through the Timmins District. Nebu's Timmins West properties lie on or in close proximity to the Porcupine Destor Fault, which hosts Lake Shore Gold's West Timmins Gold Deposit.

## THE COMPANY

Nebu is a junior resource company focused on gold exploration in Ontario. The Company's properties lie in three distinct areas: West Timmins, Burntbush, and Quest Lake. The Timmins West properties have great potential for a large find. They lie on, or in close proximity to, the Porcupine Destor Fault, host of Lake Shore Gold's 812,000-ounce West Timmins gold deposit and its Thunder Creek high-grade discovery.

For more on Nebu, see eResearch's December 21, 2009 *Initiating Report*, available at [www.eresearch.ca](http://www.eresearch.ca).





## RECOMMENDATION

We recommend the shares of Nebu Resources as a Speculative Buy for long-term risk-tolerant investors. Our 12-month Target remains \$0.65 per share.

## RATINGS HISTORY

Date	Report Type	Recommendation	Stock Price	Target Price
Dec. 21, 2009	Initiating	Speculative	\$0.32	\$0.65
Jan. 4, 2010	Perspective	No Change	\$0.415	No Change
Feb. 2, 2010	Perspective	No Change	\$0.28	No Change
Feb. 8, 2010	Perspective	No Change	\$0.275	No Change

**High-low Since Initiating:** \$0.475- \$0.25

### **eResearch Analysts:**

Shash Patel, B.Sc., MBA

Bob Weir, B.Sc., B.Comm, CFA

**NOTE:** eResearch reports on Nebu Resources Inc. and other companies are available FREE on our website at [www.eresearch.ca](http://www.eresearch.ca)

*eResearch Disclaimer: eResearch accepts fees from the companies it researches (the "Covered Companies"), and from financial institutions or other third parties. The purpose of this policy is to defray the cost of researching small and medium capitalization stocks which otherwise receive little or no research coverage.*

*To have eResearch conduct research on the Company on an Annual Continual Basis, Nebu Resources Inc. paid eResearch a fee of \$5,000 + GST, plus gave eResearch 50,000 options to purchase common shares of Nebu at \$0.20 per share until September 2011.*

*To ensure complete independence and editorial control over its research, eResearch follows certain business practices and compliance procedures. Fees from Covered Companies are due and payable prior to the commencement of research.*

*In keeping with the policies of eResearch concerning its strict independence, all of the opinions expressed in this report, including any determination of a 12-month Target Price or selection of a Recommendation (Buy-Hold-Sell) for the Company's shares, are strictly those of eResearch, and are free from any influence or interference from any person or persons at the Company.*